



NEW SOUTH WALES NEW WEED INCURSION PLAN 2009–2015

INTRODUCTION

Over 1,350 exotic plant species – weeds – have naturalised in NSW with more than 300 of them having significant impacts on the environment. Weed species pose one of the greatest threats to biodiversity and primary production in NSW.

The NSW New Weed Incursion Plan has been developed to address goals 1 and 2 of the NSW Invasive Species Plan – to exclude, and to eradicate or contain new weed species in the State.

One of the most effective ways to minimise the impacts of invasive plants is to prevent their initial incursion. Once weeds get into a new area, they have the ability to establish rapidly, and successful control often depends directly on a timely and rapid response.

This Plan will help coordinate the surveillance and identification of weeds and weed pathways, the risk assessment of species and the implementation of effective barriers to prevent their establishment. The Plan will also outline how responses to weed incursions will be coordinated, implemented, monitored and reported.

The NSW New Weed Incursion Plan provides a whole of Government approach to managing new and emerging weed species in NSW, and is consistent with the NSW Invasive Species Plan goal of fostering a cooperative culture to minimise the impacts of weeds in NSW.

NEW SOUTH WALES INVASIVE SPECIES PLAN 2008 – 2015

GOAL 1: EXCLUDE

PREVENT THE ESTABLISHMENT OF NEW INVASIVE SPECIES

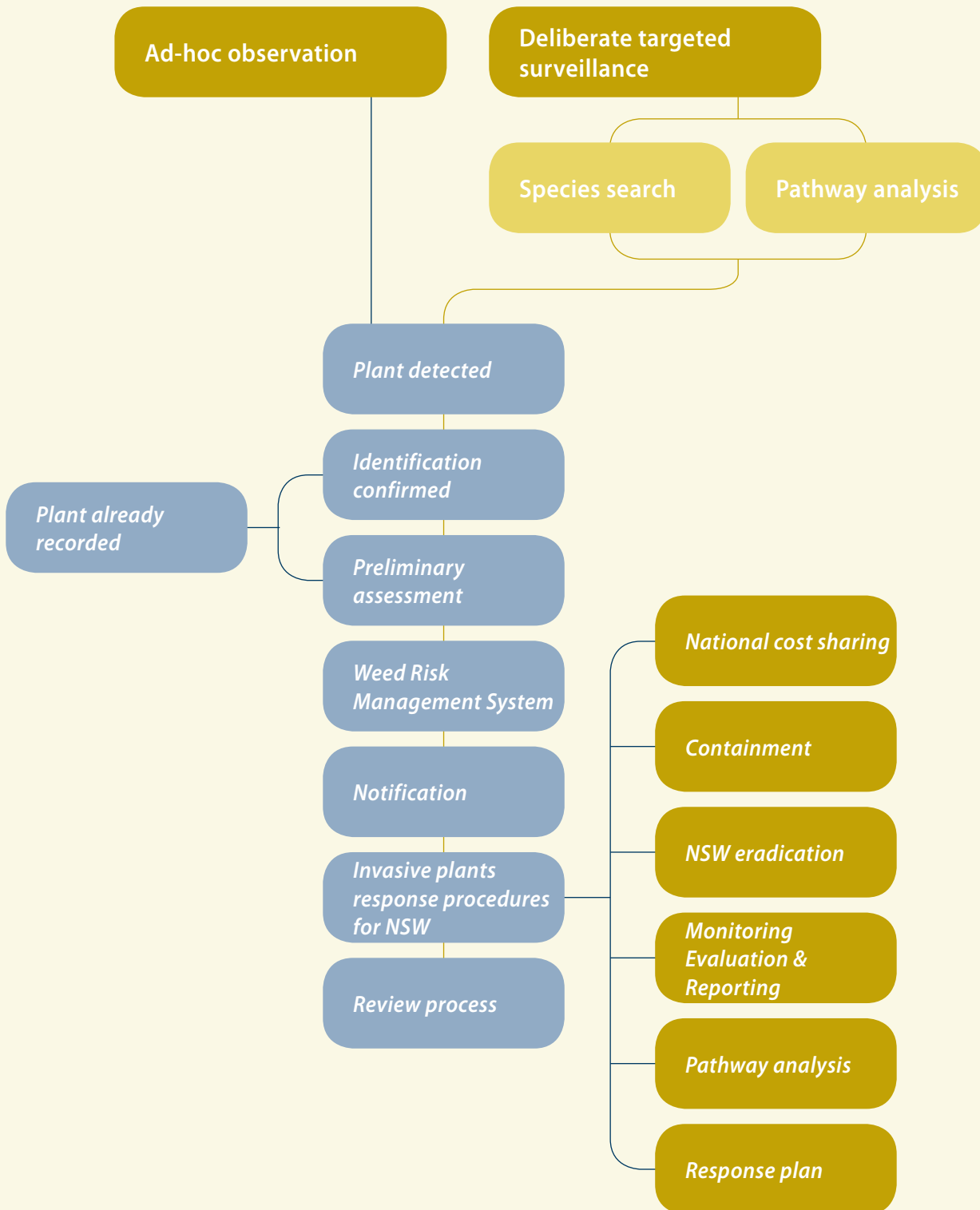
GOAL 2: ERADICATE OR CONTAIN

ELIMINATE, OR PREVENT THE SPREAD OF NEW INVASIVE SPECIES



NEW SOUTH WALES

NSW NEW WEED INCURSION PLAN – PROCESS



INCURSION PLAN FOR INVASIVE PLANT SPECIES IN NSW

STAGE 1. DELIBERATE AND TARGETED SURVEILLANCE		QUARTERLY TIMELINE							
ACTION	ROLE	Q1	Q2	Q3	Q4	Q1	Q2	Q3	Q4
1.1. Objective – Establish and maintain list of targeted species		Q1 – 31 March 2009 Q2 – 30 June 2009 Q3 – 30 September 2009 Q4 – 31 December 2009 Q1 – 31 March 2010 Q2 – 30 June 2010 Q3 – 30 September 2010 Q4 – 30 December 2010							
1.1.1. Develop target species list in consultation with stakeholders – based on WoNS, Alert list, CC1 & CC2 etc.	Cross agency reference group	■	■	■					
1.1.2. Review species risk & feasibility for inclusion/removal on list	Cross agency reference group							■	■
1.2. Objective – Build capacity of stakeholders to detect and identify new invasive plant species									
1.2.1. Review Noxious weeds grants process	DPI	■							
1.2.2. Develop business plan for the establishment of a training taxonomist position – to identify weeds, train Weed Officers and other agency people in weed identification	DPI & DECC	■	■						
1.2.3. Form cross agency reference group DECC, DPI, LCA, and Botanic Gardens Trust	DPI		■	■					
1.2.4. Revise and republish herbarium collection and submission procedures	DPI & DECC		■	■					
1.2.5. Review current capacity building activities for effectiveness, including previous client needs analysis. Conduct stakeholder input survey if necessary	DPI				■	■	■		
1.2.6. Focus part of Biennial NSW Weed Conference on new and emerging weeds i.e workshops, talks, displays and competitions.	DPI			■					
1.2.7. Increase broader awareness though programs like – NSW No space 4 weeds	DPI	■	■	■					
1.2.8. Establish network – links on internet and publications	DPI				■	■	■		
1.2.9. Develop 'Tool kit' - extension package for high priority species. Cards, training field trips etc.	DPI				■	■	■	■	
1.2.10. Implement training for emerging species management	DPI							■	■
1.3. Objective – Develop auto-notification system for new national, state and regional records in NSW & ACT									
1.3.1. Develop procedure for auto-notification who, how & when. Possible integration of training taxonomist role	DPI & DECC				■	■	■		
1.3.2. Integrate BioSirt into notification system	DPI				■	■	■	■	
1.3.3. Develop process to collate and register new information into central repository	DPI			■	■	■	■		
1.4. Objective – Establish pathways analysis to determine target species, pathways and areas									
1.4.1. Review existing knowledge, identifying gaps	DPI				■	■	■		
1.4.2. Establish agreed list of areas for surveillance	Cross agency reference group					■	■	■	
1.4.3. Identify priority incursion pathways/areas	DPI			■	■	■	■		
1.4.4. Develop search procedure and validate survey methodologies	DPI				■	■	■	■	
1.4.5. Combine target species based on pathways/areas	DPI				■	■	■	■	

1.5. Objective – Develop a state-wide protocol for surveillance and reporting	
1.5.1. Create and implement extension materials	DPI & Cross agency reference group
1.6. Objective – Establish system to accurately and quickly identify weed species	
1.6.1. Develop business plan for training taxonomist position	DPI & DECC
1.6.2. Establish protocol to submit specimens and data to taxonomist	Cross agency reference group
STAGE 2. PRELIMINARY ASSESSMENT	
2.1. Objective – Establish protocols	
2.1.1. Establish protocol for initial assessment	DPI
STAGE 3. WEED RISK MANAGEMENT SYSTEM	
3.1. Objective – Establish system	
3.1.1. Establish WRM protocol	DPI & Cross agency reference group
3.1.2. Deliver WRM with agreed timeframes	DPI & Cross agency reference group
3.2. Objective – Establish WRM database	
3.2.1. Publish results of WRA on accessible database i.e. extranet	DPI
3.3. Objective – Build capacity to do assessments	
3.3.1. Develop business plan to establish Weed Risk Assessor position	DPI
3.4. Objective – Adopt current system	
3.4.1. Train regional weed managers in WRM	DPI
3.4.2. Integrate WRM into declaration applications, regional planning and noxious weed grant applications.	DPI
STAGE 4. NOTIFICATION	
4.1. Objective – Establish NSW Notification procedure	
4.1.1. Formalise existing processes for National, State, regional, local, cross-jurisdictional and industry	DPI & Cross agency reference group
4.1.2. Develop notification module in BioSirt	DPI
STAGE 5. RESPONSE	
5.1. Objective – Establish response procedure	
5.1.1. Develop decision making process for response type e.g. National cost-share eradication, containment, monitor, review & reporting to stakeholders.	DPI & Cross agency reference group